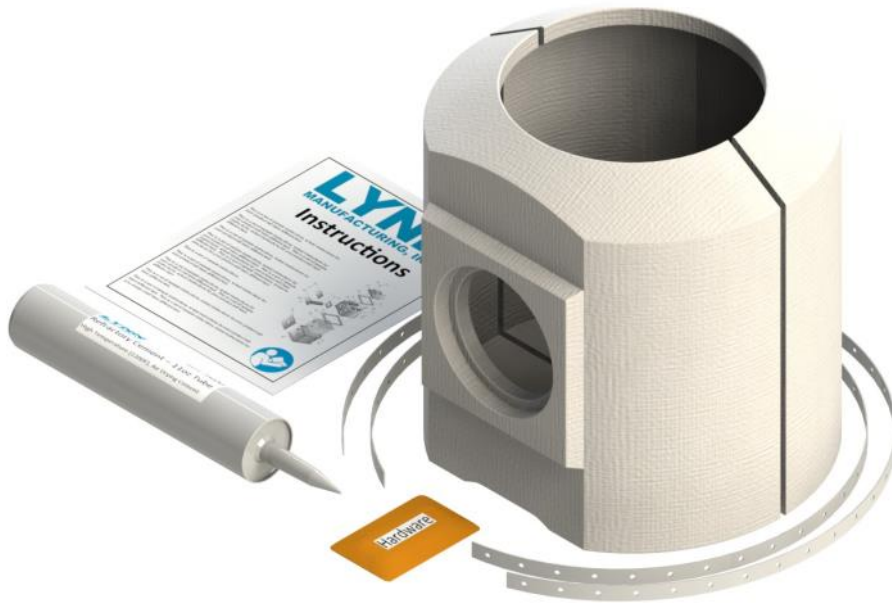


Combustion Chamber Kit, Olsen Airco, 28562, 88231B1, 9200C

KIT CONTAINS: Combustion chamber firepot 28562 88231B1 9200C cut in half, stainless steel straps, hardware, spacer, refractory cement and instructions.

FIT: All models using OEM part numbers 28562 or 88231B1 or 9200C including model BCL-115/125, BCL-120(S) (ST), 145(S)(ST), BFL-120, BFL-120T, BFL-145 BFL-145T & HTL-100B/C & WTL-100

INSTALLATION: A caulking gun is required for proper installation. **Protect from freezing:** This kit contains a sealant that is damaged if frozen.

CAUTION: Protect this product from freezing to prevent damage to wet refractory.

**Health and Safety Warning:**

Ceramic fiber products are suspected of causing cancer by inhalation. All ceramic fiber products have a hazard communication warning label and a prop 65 warning for airborne fiber inhalation. You should minimize exposure to airborne fibers. When handling ceramic fiber we recommend using particulate respirator mask (N95), protective gloves, safety glasses and long sleeve clothing. For complete safety information consult the SDS sheet. <https://www.lynnmfg.com/documentation/>

**Application, Installation and Use Warning:**

In applications including; boilers, furnaces, wood stoves, wood inserts, fireplaces, heating devices, and other appliances, parts must be used consistently with original equipment manufacturers specifications, design, function and operation.

Improper installation or use of this product could result in a fire, smoke inhalation or carbon monoxide poisoning. Products should be installed by a licensed and certified technician in compliance with all national, state and local codes. Products should be inspected annually by a licensed and certified technician for wear, brittleness, cracking or crumbling, and replaced as necessary. Lynn Manufacturing, Inc. recommends installers certified by NFI, CSIA or NORA.

Never work on a piece of equipment or touch the fibrous product when it is hot, as the product may show no visible signs of heat from glowing or smoking.

Lynn Manufacturing, Inc offers hundreds of products with many applications. Determining whether the product is a fit for the particular purpose and suitable for an application is the sole responsibility of the purchaser/installer.

In no event shall Lynn Manufacturing, Inc be liable for any damages to property or life arising from or connected with the use of this product.

V1119