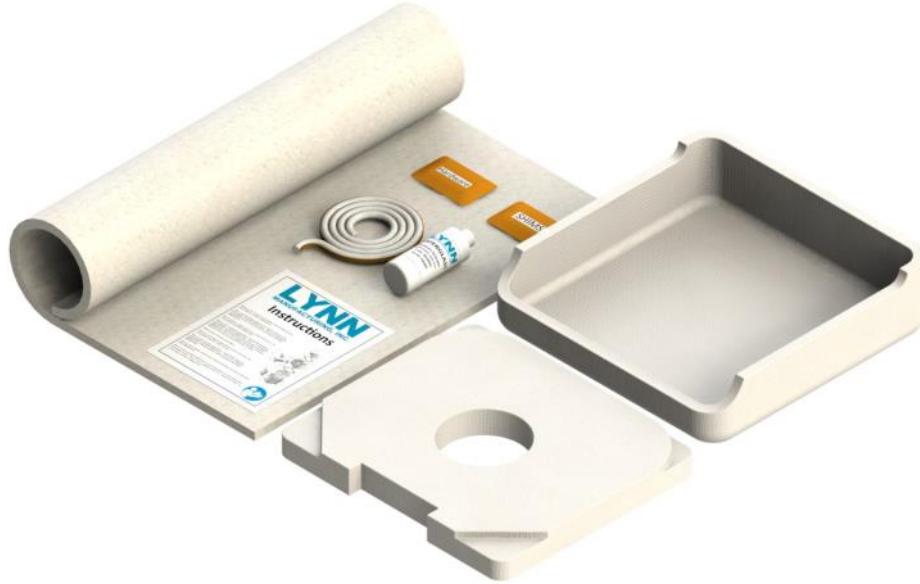


Combustion Chamber Kit, Peerless JO-TW & JOT-TW



KIT CONTAINS: Target Wall CC-3025, burner mounting plate insulation, base liner insulation blanket CC-3043, high temperature rope, hardware kit, waterglass, instructions.

FIT: Fits all Peerless JO-TW & JOT-TW series boilers including: JO-TW075, JO-TW, JO-TW100, JO-TW125, JO-TW150, JO-TW175, JO-TW200, JO-TW250, JO-TW275, JO-TW300 * JOT-TW075, JOT-TW, JOT-TW100, JOT-TW125, JOT-TW150, JOT-TW175, JOT-TW200, JOT-TW250, JOT-TW275, JOT-TW300

SAVE TIME: Kits contain everything needed for the job in one box, saving time and simplifying ordering.

Made in the USA by Lynn Manufacturing, Inc.



Health and Safety Warning:

Ceramic fiber products are suspected of causing cancer by inhalation. All ceramic fiber products have a hazard communication warning label and a prop 65 warning for airborne fiber inhalation. You should minimize exposure to airborne fibers. When handling ceramic fiber we recommend using particulate respirator mask (N95), protective gloves, safety glasses and long sleeve clothing. For complete safety information consult the SDS sheet. <https://www.lynnmfg.com/documentation/>



Application, Installation and Use Warning:

In applications including; boilers, furnaces, wood stoves, wood inserts, fireplaces, heating devices, and other appliances, parts must be used consistently with original equipment manufacturers specifications, design, function and operation.

Improper installation or use of this product could result in a fire, smoke inhalation or carbon monoxide poisoning. Products should be installed by a licensed and certified technician in compliance with all national, state and local codes. Products should be inspected annually by a licensed and certified technician for wear, brittleness, cracking or crumbling, and replaced as necessary. Lynn Manufacturing, Inc. recommends installers certified by NFI, CSIA or NORA.

Never work on a piece of equipment or touch the fibrous product when it is hot, as the product may show no visible signs of heat from glowing or smoking.

Lynn Manufacturing, Inc offers hundreds of products with many applications. Determining whether the product is a fit for the particular purpose and suitable for an application is the sole responsibility of the purchaser/installer.

In no event shall Lynn Manufacturing, Inc be liable for any damages to property or life arising from or connected with the use of this product.

V1119