



Health and Safety Warning:

Ceramic fiber products are suspected of causing cancer by inhalation. All ceramic fiber products have a hazard communication warning label and a prop 65 warning for airborne fiber inhalation. You should minimize exposure to airborne fibers. When handling ceramic fiber we recommend using particulate respirator mask (N95), protective gloves, safety glasses and long sleeve clothing. For complete safety information consult the SDS sheet. <https://www.lynnmfg.com/documentation/>



Before you start work:

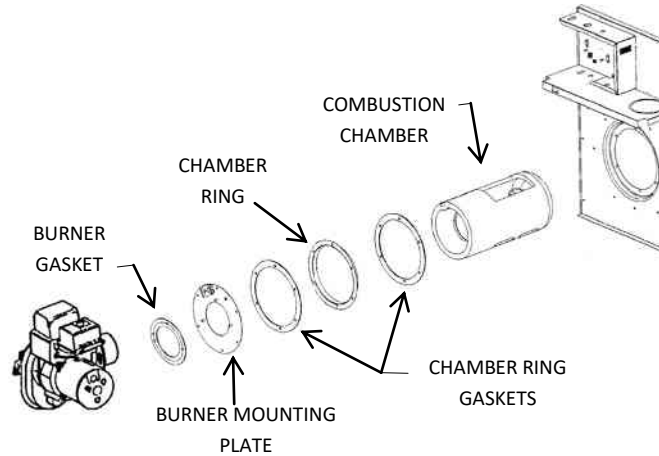
1. Read all instructions and check the kit number before starting work. **See Note A.**
2. Turn off service switch on boiler and all other electrical disconnect switches.
3. Close fuel supply valve(s) and disconnect fuel line from the burner.

Note A: Correct Kit

Please check this is the correct kit for your make & model boiler by checking the box label or consulting our Ready Reference.

Removal:

4. Check to make sure all electric power is off, and the oil line is disconnected.
5. Remove oil burner.
6. Remove burner gasket.
7. Remove the burner mounting plate (2 nuts & 4 screws).
8. Remove the chamber ring and two gaskets.
9. Remove the combustion chamber and clean out the heat exchanger.



Installation:

10. Insert the new combustion chamber into the furnace opening, making sure the large square opening is facing up and the recessed back area of the chamber lines up with the chamber bracket at the back of the heat exchanger. Make sure the observation opening is in the correct position.
11. Install the new inner chamber ring gasket making sure the triangle shaped notch is at the bottom.
12. Install the chamber ring and the new outer gasket making sure the notch is at the bottom.
13. Install the burner mounting plate with the 2 nuts and 4 screws.
14. Install the new burner gasket and loosely start the 3 nuts.
15. Remount the burner and tighten the nuts.
16. Fire the Burner. **See Note E.**

Note E: Initial Firing

Fire the burner for 15 minutes to allow ceramic fiber insulation to "cure". It is normal when first fired for some smoke and a slight odor to occur. Combustion test must be performed after curing process.

Application, Installation and Use Warning:

In applications including; boilers, furnaces, wood stoves, wood inserts, fireplaces, heating devices, and other appliances, parts must be used consistently with original equipment manufacturers specifications, design, function and operation.

Improper installation or use of this product could result in a fire, smoke inhalation or carbon monoxide poisoning. Products should be installed by a licensed and certified technician in compliance with all national, state and local codes. Products should be inspected annually by a licensed and certified technician for wear, brittleness, cracking or crumbling, and replaced as necessary. Lynn Manufacturing, Inc. recommends installers certified by NFI, CSIA or NORA.

Never work on a piece of equipment or touch the fibrous product when it is hot, as the product may show no visible signs of heat from glowing or smoking.

Lynn Manufacturing, Inc offers hundreds of products with many applications. Determining whether the product is a fit for the particular purpose and suitable for an application is the sole responsibility of the purchaser/installer.

In no event shall Lynn Manufacturing, Inc be liable for any damages to property or life arising from or connected with the use of this product.

V0420